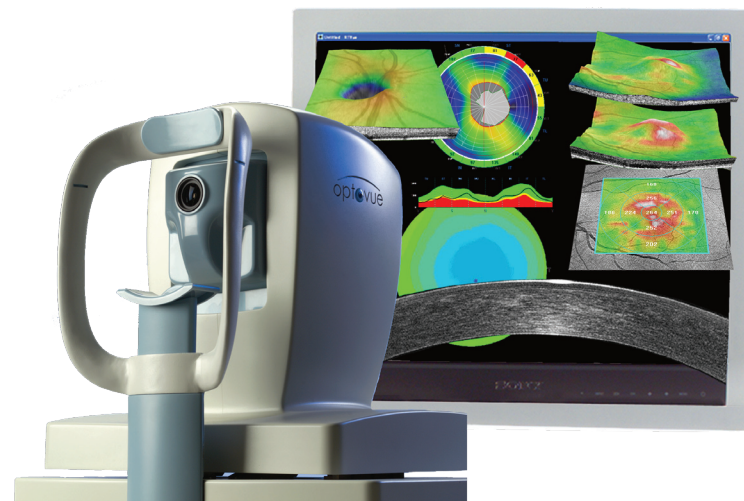


Optovue's RTVue is at the cutting edge of technology and has features that help your doctor to discover even subtle losses in your optic nerve and retina and to follow these losses over time. This information is critical to treatment.

**THIS PRACTICE HAS INVESTED IN
CUTTING EDGE TECHNOLOGY
DEVELOPED TO HELP YOUR DOCTOR
PREVENT BLINDNESS**

Diabetic Retinopathy

with
RTVue
*Fourier-Domain
Optical Coherence Tomography*



optovue

Copyright 2009 Optovue, Inc., Fremont, CA. All rights reserved.
RTVue is a registered trademark of Optovue, Inc.

P/N 300-44142 Rev A

Diabetes is reaching epidemic proportions throughout the world. It continues to be the most common cause of vision loss in many individuals. Loss of vision is most often related to the degree of control of the disease so the patient can really influence their long-term eye health.

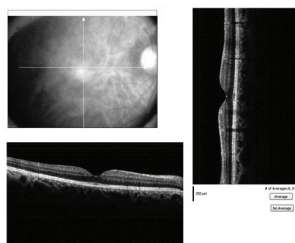
The early signs of diabetic retinopathy are often discovered on a routine eye examination. These early signs are usually changes in the blood vessels of the retina. These vessels then leak causing retinal swelling and bleeding within the eye. This causes loss of vision. This swelling is very difficult to see in a routine eye examination so your doctor must rely on RTVue digital imaging. A view that your doctor has of your retina can be compared to looking at a painting on the wall. It is a picture in two dimensions. What RTVue technology is able to do is to look at the painting in three dimensions. As a result, the doctor is able to view your eye in 3-D and diabetic retinopathy happens in three dimension. This technology gives your doctor an MRI type image of the retina to uncover the true source of the swelling or bleeding so that proper treatment may be prescribed.



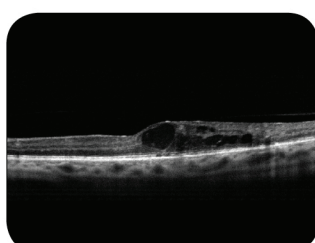
The Healthy Retina



A patient with Diabetic Background Retinopathy



The RTVue scan of the healthy retina showing retinal structure



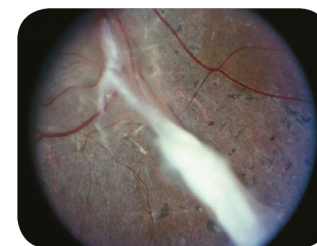
RTVue scan of Diabetic Retinopathy

With any retinal swelling that can decrease vision there are new treatments available every day. Additionally, you will receive advice on decreasing the likelihood of progression by changing your lifestyle. Diet, exercise and proper nutrition, including supplements, are critical in the control of all forms of diabetes. You should know your A1C levels as they are the best predictor of progression of the disease and diabetic retinopathy. If you smoke, you will be advised to stop.

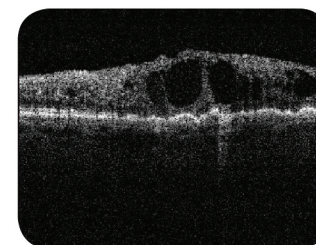
The rapidly decreasing vision in diabetic retinopathy is due to either a hemorrhage or retinal traction that can create retinal detachment. It is important for your doctor to detect this in a timely fashion. At this stage your doctor has a number of options to assist in your care. Imaging from RTVue helps your doctor determine your options.



A patient with Proliferative Diabetic Retinopathy



Another patient with Proliferative Diabetic Retinopathy



RTVue scan showing Diabetic Retinal Edema

RTVue imaging will also help your doctor follow any changes in your retinal situation and will help evaluate the effect of various treatment techniques.

Management of diabetic retinopathy depends on you, your primary care doctor and your eye doctor. You should not lose vision from diabetes if you control your condition and have regular eye examinations. Should diabetic retinopathy be discovered early, your doctor should be able to help you prevent disaster. RTVue is there to help your doctor prevent blindness. Most patients, with the help of their doctors, will maintain usable vision throughout their lives.